



FLYING FOX

# CONTENT

|                     |     |
|---------------------|-----|
| Introduction        | 6   |
| Lower deck          | 30  |
| Main deck           | 52  |
| Bridge deck         | 76  |
| Upper deck          | 114 |
| Sun deck            | 136 |
| Roof deck           | 150 |
| General Arrangement | 160 |
| Specification       | 162 |



## INTRODUCTION

**F**LYING FOX was completed in March, 2019, by the renowned German shipyard Lürssen in Bremen. Founded in 1875 by the 24 year old Friedrich Lürßen in Aumund near Bremen, the Lürssen yard draws back on a long history of building many of the world's finest yachts. Not only by her enormous size - with 136m she is among the top 20 in the world - but especially through her innovative, bold and curvy design by award winning Espen Øino, she became an acclaimed distinctiveness in the yachting scene.







At 136 metres in length and PYC compliant, her 22.5 m wide beam boasts a massive volume and ensures a comfortable living space together with a unique design of both exterior and interior. The yacht's proportions are well balanced, allowing for expansive exterior decks and more intimate formal areas. Cutaway bulwarks on the bridge deck and upper deck allow plenty of natural light to flood in through the floor-to-ceiling windows.



FLYING FOX

**F**LYING FOX is built with a steel hull and an aluminium superstructure. The shapely curves have been an enormous challenge for the welders. Perhaps even more amazing is her performance: FLYING FOX is capable of 20 knots flat, with a cruising speed of 15 knots.



















Like a mirror – the perfectly varnished outer skin of the hull reflects the white foam pattern of the water below. Peek-a-boo – on each side of the bridge deck a lifeboat is hidden behind the grid. The harmony of the outer lines is not disturbed. In order to launch the boat a 1.2 ton piece of the bulwark swings up and the lifeboat, hanging under two beam cranes, can move out.





Muscle games – the outward-bending side decks make the hull wider and offer a better view ahead.









**T**hanks to the bow and stern thruster FLYING FOX can turn on a sixpence. The relaxation area on starboard has its own fold-down balcony.





## WATER SPORTS



All platforms are integral parts of the aft beach club, which occupies the entire area aft of the tender garage and is well provided with more wellbeing facilities. From here there is direct access leading to the stern bathing platform.





A t anchor – the sea terrace  
enables easy water access  
for various water sport activities. A large  
selection of water sports equipment and  
matching tenders is available.

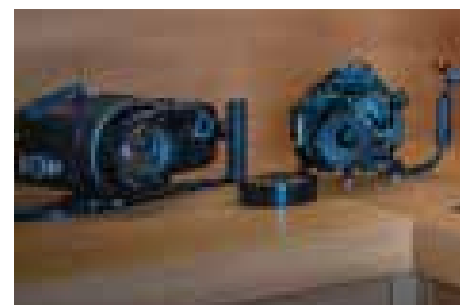


## KITE & DIVE STORE

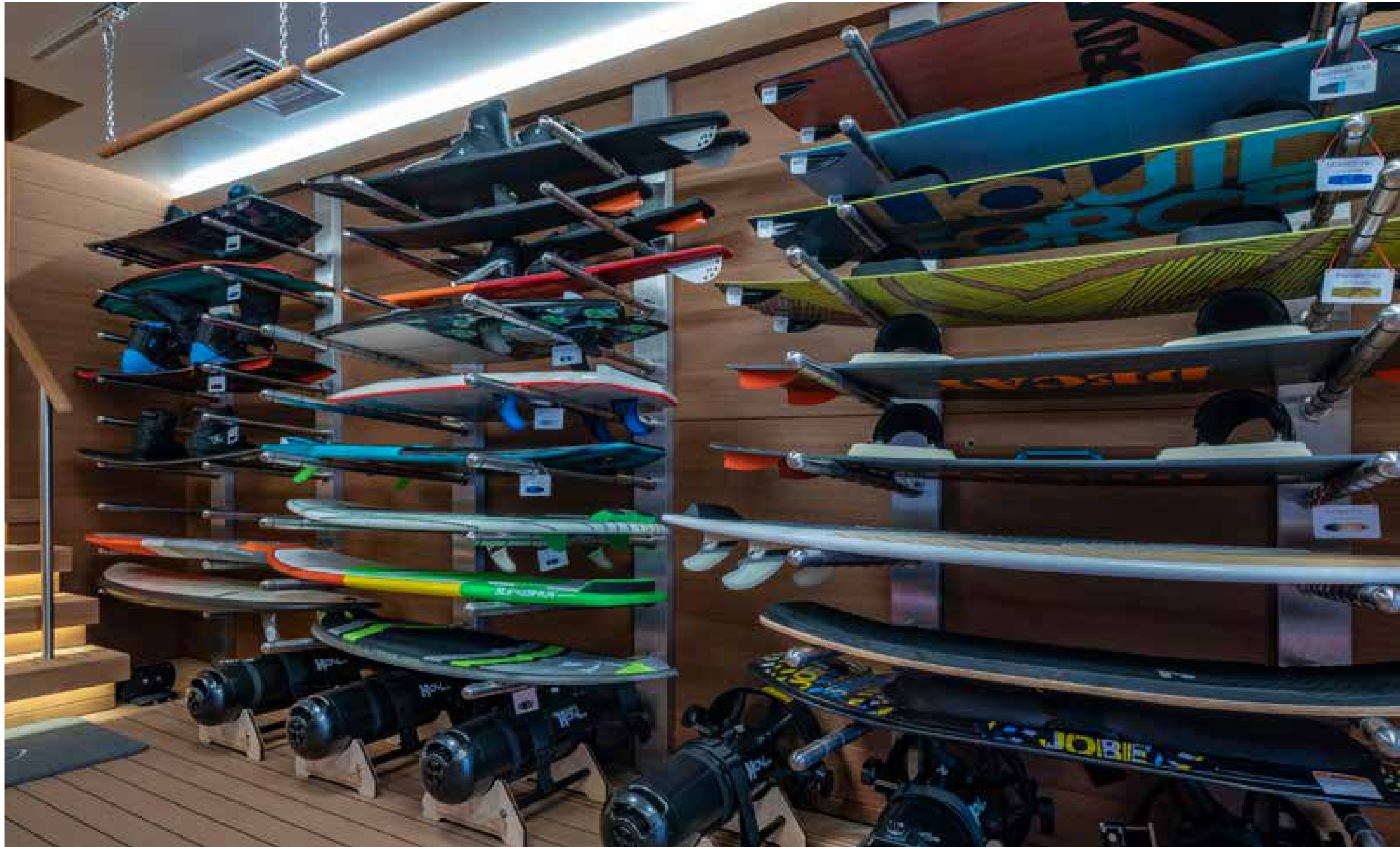
Only the best for water sports – the dive store with compressor pumps and its own folding platform as a starting point for underwater adventures.

For experienced divers a professional double lock decompression chamber IHC1600mm with three places is available, which is considered among the best available today.

A great variation of diving suits and even the latest generation of underwater cameras is offered - everything of the highest available quality.







Surfers and divers paradise that leaves absolutely nothing to be desired - a kite store with a ceiling tracking system for the ultimate in water sports equipment. Guests will find a huge selection of surfboards with all sorts of kites and equipment, as well as wake boards, stand-up paddling, sea-bobs, kayaks and much much more. The water world is waiting....









**T** rue luxury - enjoy the evening sun on the stern bathing platform.







## SEA LOUNGE

If it is too uncomfortable outside or for a change after the sauna session you can relax in the pool of the Sea Lounge. Comfortable sofas invite you to chill and talk in small groups.



This cozy pool on the lower deck is protected against bad weather by a sliding glass roof. Stairs flanked by sofas and evergreen plants lead to the stern bathing platform.





## HAMMAM & SAUNA

**R**ecovery after active water sports is offered by a perfect hammam, a Finnish sauna and a cryo sauna, and finally the relaxation area with its own sea terrace.





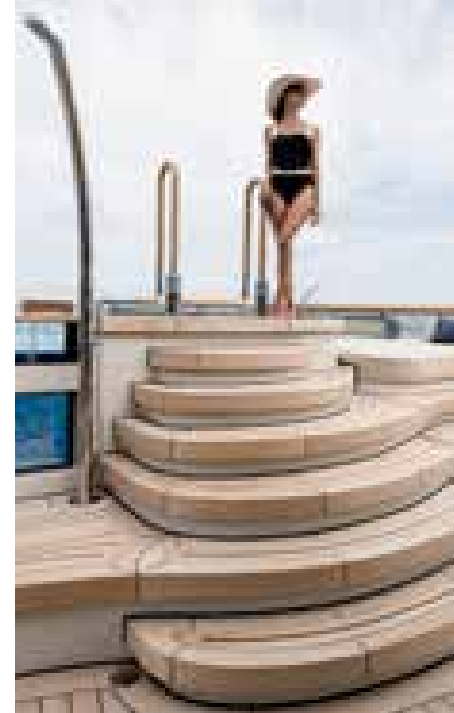




THE POOL



Unique - the 12-metre swimming pool, which runs transversely on the aft main deck is a first for a superyacht of this size and a technological challenge unlocked. The sun cushions invite you to dream.









Extensive, open and half-open deck areas offer a variety of retreat options without forgoing the sight of the open sea.







## GUEST CABINS

VIP Suite 10 "Lobster"

VIP Suite 9 "Clownfish"

VIP Suite 8 "Whale"

VIP Suite 7 "Crab"

VIP Suite 6 "Walrus"

VIP Suite 5 "Turtle"

Central Staircase

VIP Suite 4 "Octopus"

VIP Suite 3 "Hammer Head"

VIP Suite 2 "Starfish"

VIP Suite 1 "Sea Horse"

Unlike most large yachts emphasis was placed on the same design of all suites at Flying Fox - there should be no differences in the quality or equipment of the cabins.







## VIP SUITES

The Mark Berryman interior offers ten suites for 22 guests on the main deck all with private sea view terraces. The innovation in shape and comfort and a modern but yet high level of outfitting create a calm atmosphere enhanced by the use of warm and natural textiles and neutral decorations.







Furniture, floors and decorative showcases are made of bamboo, teak and oak while the white carpets are made of tufted silk. Artificial skylights that stretch across the entire ceiling, bathe the living rooms and bathrooms in a pleasant even light.



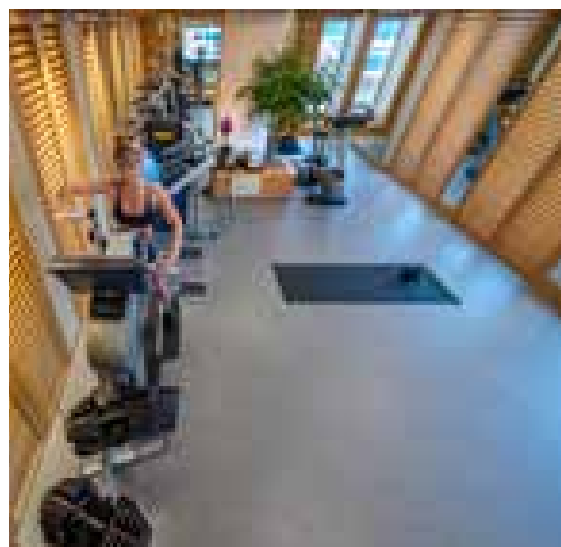


## BEAUTY AND GYM

Not only for the ladies, the beauty center offers everything that the body needs to feel good.

From hair and skin care to manicure and pedicure, massages and spa treatments, you'll find everything you need to feel relaxed and attractive.





The Gym on Flying Fox is a special feature. It is rare to find one of this enormous size on a yacht. On more than 90 square meters it offers more than most sports clubs and professional gyms. You will find the newest sophisticated devices according to the latest sports medicine findings - here you can easily bring your body into great shape.





BRIDGE DECK











## OUTSIDE DINING

The sumptuous seating on the aft bridge deck creates an elegant and comfortable atmosphere with the casual sofa rounds. You can choose between airy outdoor living or indoor feeling with the sliding glass windbreakers on both sides shut.







The formal dining table is well protected under the upper deck and can seat 22 people.



Each guest can enjoy any kind of cuisine made real with all kinds of appliances like a Teppanyaki grill, rotisserie oven, BBQ or split roast tandoori oven. Two wet bars ensure the supply of all imaginable drinks.











## MAIN SALOON

Overwhelming and unique is the 2-floor salon with fireplace, a maxi TV screen and a cuddly sofa on the starboard side's ground floor.







## DINING

Opposite to port, partly separated by an artificial coral aquarium you find an impressive 22-seats dining table. Groups of selected plants provide a refreshing natural environment.





## MAIN STAIRCASE

The central staircase which extends from the main deck to the bridge deck impresses with huge trees and an Etruscan style mosaic on the floor.







## HELI PLATFORM

A helicopter has just  
started from the main  
helipad on the bow platform.









**R**ight before touch down:  
A sightseeing tour with  
the heli around FLYING FOX to  
see the impressive dimensions and  
shapes of the yacht from angles  
that are not possible from the  
tender or from the shore.





## CINEMA

For those who prefer true cinema enjoyment to the usual TV screens, there is a luxurious cinema with comfortable armchairs and a wide selection of films available.





## WHEELHOUSE

**F**LYING FOX'S bridge is far from the normal cool ship command centres, clad in grey leather. This bridge radiates the same light and warm atmosphere as the living rooms. Interested guests can watch the bridge personnel at the ship's command.









## UPPER DECK AFT

The upper deck is reserved for the owner and his party with an opulent wetbar and a table for ten to port, a large TV lounge to starboard and a fireplace at the balustrade.





The shapes of the decks make you instinctively think of Italian music, warm gentle sea breezes and complete relaxation. The filigree awnings let sunlight through again and again, creating a symphony of light and shadow.





A look through the fisheye lens reveals the harmonious interplay of shapes, colors, materials and different surfaces. Untreated wood shows a natural charm when sun and salt water take their influence on it.





## MASTER SALOON

**D**irect connection - stairs are leading from the main saloon to a balustrade and the master saloon on the upper deck. Behind the bridge there is a conference room adjacent to the first officer's office.

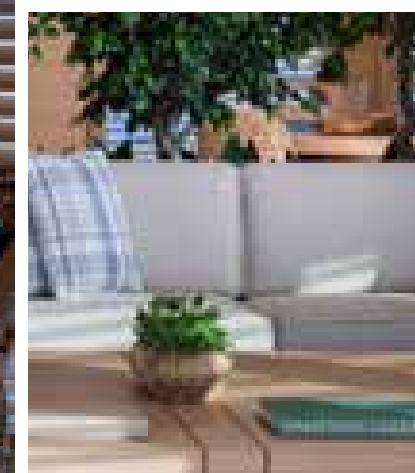


A vertebra of a whale, a comfortable seating round and a dining table for only ten give the master saloon its special touch.

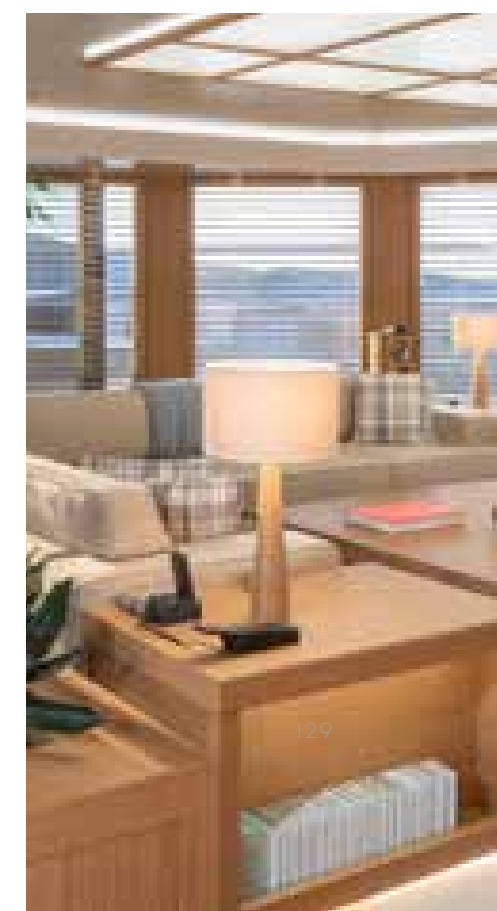




## MASTER CABIN „SHELL“



The Master stateroom is simply elegant and reduced to the necessary with a breakfast table opposite to the king size bed on port.







C lear rectangular shapes define the sofa and coffee table in front of the gas-fuelled fireplace.



## DRESSING ROOM

Lorem ipsum dolor  
sit amet, consetetur  
sadipscing elitr, sed diam nonumy  
eirmod tempor invidunt ut labore  
et dolore magna aliquyam erat,  
sed diam voluptua. At vero eos  
et accusam et justo duo dolores



## MASTER BATHROOM



The en-suite bathroom with the central tub and the opposite shower, two toilets and two trees and a view of the sea leaves no wish unfilled.







SUN DECK



This is far more than  
naval architecture or  
styling. This is sovereign modern  
art, impressively staged with light,  
stainless steel and teak - and a  
sure feeling for balanced shapes.

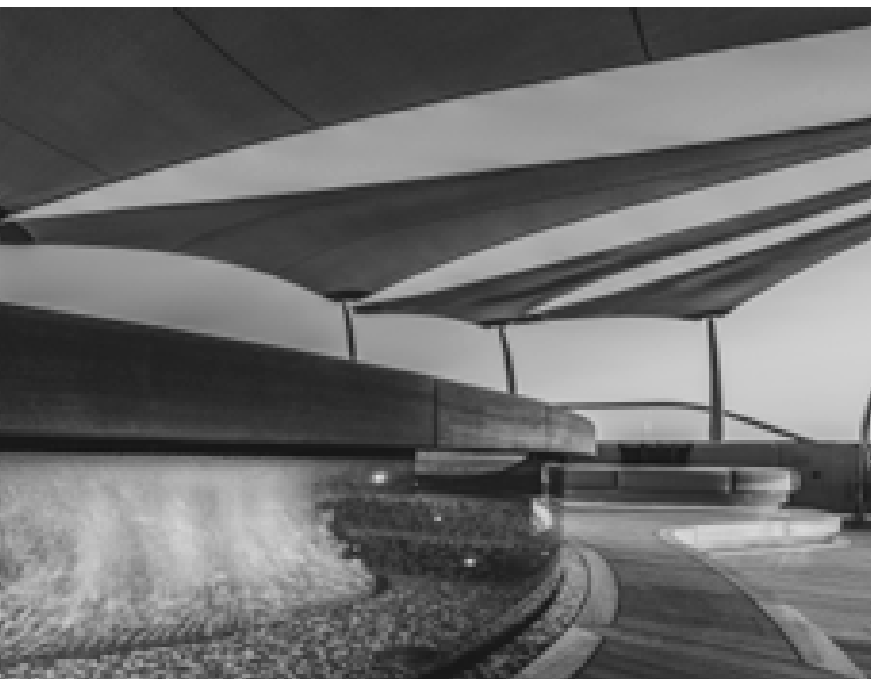






The dimensions of this huge yacht can be felt when you see these pictures. The top edges of the six exhaust pipes are well seven meters above the man's feet





Never seen before on a yacht:  
The perfectly curved bulwarks of  
the side decks. Here we clearly see how far  
they protrude and how much area is gained  
through it.





## WINTER GARDEN

**F**looded with light – three oversized circular skylights and floor-to-ceiling panoramic windows enchant the winter garden.





Round shapes are also the topic here. The gentle geometry of the circle is complemented by the colors of nature, the colors of woods and fabrics, which are finely varied by the light of the skylights. A space that invites you to recreation as well as to lively discussions with a breathtaking view. For the later evening, a small intimate bar provides relaxation.









## ELEVATOR



Due to the central skylight, the daylight falls through the elevator shaft and the bottom of the lift down to the bottom of the lower deck.

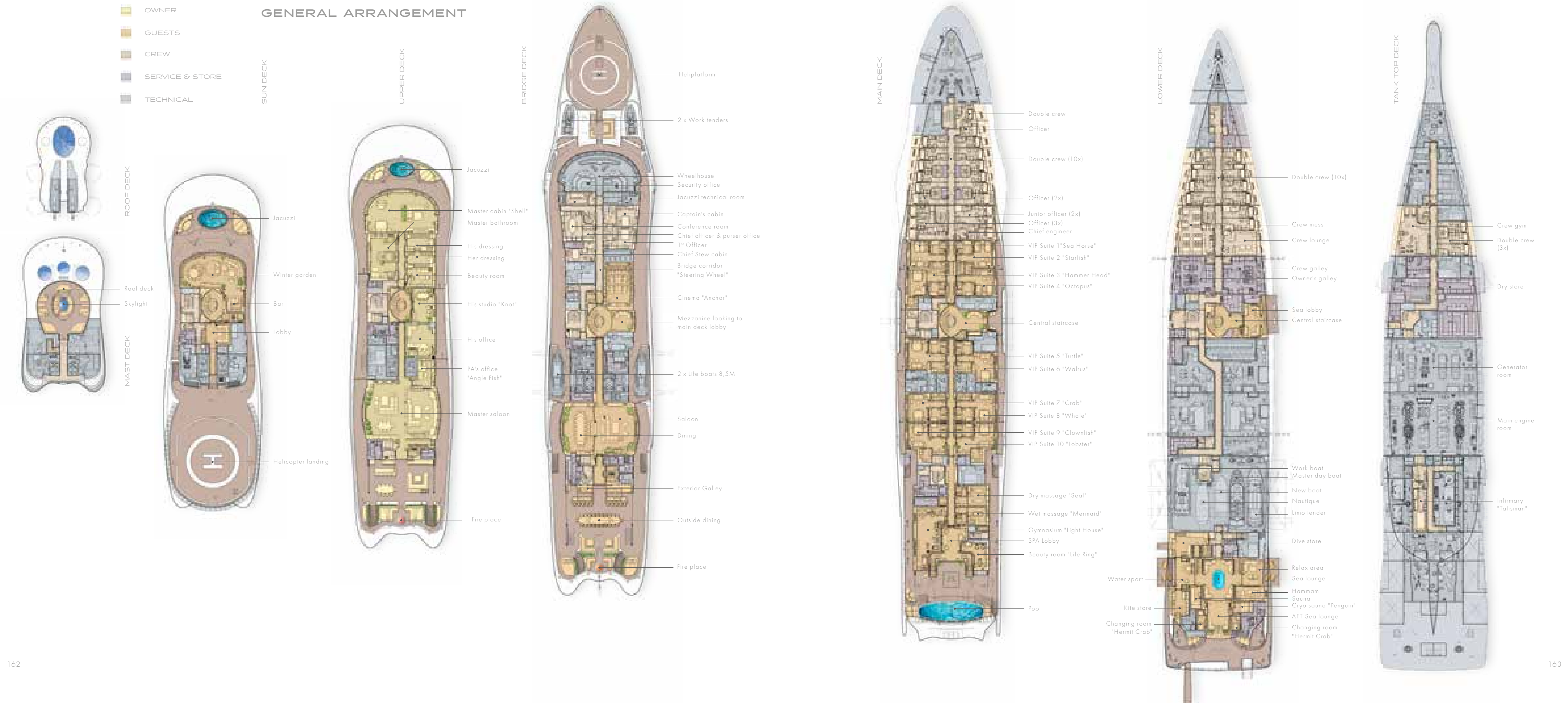












SPECIFICATION

|                         |                                                                                                                                                                                                                                                                                                       |
|-------------------------|-------------------------------------------------------------------------------------------------------------------------------------------------------------------------------------------------------------------------------------------------------------------------------------------------------|
| Shipyard:               | Lürssen                                                                                                                                                                                                                                                                                               |
| Year:                   | March 2019                                                                                                                                                                                                                                                                                            |
| Owner's Representative: | Imperial                                                                                                                                                                                                                                                                                              |
| Managed by:             | Imperial                                                                                                                                                                                                                                                                                              |
| Exterior Design:        | Espen Øeino                                                                                                                                                                                                                                                                                           |
| Interior Design:        | Mark Berryman                                                                                                                                                                                                                                                                                         |
| Length Overall:         | 136.00m                                                                                                                                                                                                                                                                                               |
| Length Waterline:       | 124.20m                                                                                                                                                                                                                                                                                               |
| Beam:                   | 22.50m                                                                                                                                                                                                                                                                                                |
| Draught:                | 5.00m                                                                                                                                                                                                                                                                                                 |
| Construction:           | Steel Hull, Aluminium Superstructure                                                                                                                                                                                                                                                                  |
| Gross Tonnage:          | 9022GT                                                                                                                                                                                                                                                                                                |
| Guests:                 | 36 cruising / 22 sleeping (plus 3 additional Pulman beds, total 25)                                                                                                                                                                                                                                   |
| Crew:                   | 54                                                                                                                                                                                                                                                                                                    |
| Maximum Speed:          | 20 knots                                                                                                                                                                                                                                                                                              |
| Cruising Speed:         | 15 knots                                                                                                                                                                                                                                                                                              |
| Range:                  | 6,500 Nautical Miles                                                                                                                                                                                                                                                                                  |
| Main Engines:           | MTU 16V 1163 M84 twin CPP 5 blades                                                                                                                                                                                                                                                                    |
| Generators:             | MTU 12V 4000 M33F                                                                                                                                                                                                                                                                                     |
| Stabilisers:            | Quantum QC 3600 XT Zero Speed (Forward)<br>Quantum QC 3600 Zero Speed (After)                                                                                                                                                                                                                         |
| Stern Thruster:         | Brunvol FU45 LRC 1375                                                                                                                                                                                                                                                                                 |
| Bow Thruster:           | Brunvol FU63 LRC 1750                                                                                                                                                                                                                                                                                 |
| Fuel Capacity:          | 682,500L                                                                                                                                                                                                                                                                                              |
| Classification:         | DNV/ GL Passenger Yacht code                                                                                                                                                                                                                                                                          |
| Guest Accommodation:    | Large staterooms with office, bathroom, walk in wardrobe and beauty salon.<br>All Guest suites have their own balcony<br>10 Guest suites on Main deck, 7 with double beds,<br>3 twin. All Main deck suites have either a pulman bed or single sofa bed which<br>can be transformed into a double bed. |

|                 |                                                                                                                                                                                                                                                                                                                                                                                                                                                                                                                                                                       |
|-----------------|-----------------------------------------------------------------------------------------------------------------------------------------------------------------------------------------------------------------------------------------------------------------------------------------------------------------------------------------------------------------------------------------------------------------------------------------------------------------------------------------------------------------------------------------------------------------------|
| 2 Helipads:     | One on Sun deck aft (D-Value 18m), fitted for Airbus EC175 helicopter<br>One on Bridge deck forward (D-Value 14m).                                                                                                                                                                                                                                                                                                                                                                                                                                                    |
| Tenders:        | 12.5m Custom Compass Enclosed Limousine Tender<br>11.8m Custom Windy Open Limousine Tender<br>10.5m Compass Beach Landing Craft<br>8.5m G25 Super Air Nautique Coastal<br>6.8m Pascoe Jet Drive RHIB Work Tender<br>6.8m Pascoe Stern Drive RHIB Work Tender<br>2 x 8.5m Fassmer SEL-RT Life Boats                                                                                                                                                                                                                                                                    |
| Water Sports:   | 2 x Sea-Doo GTX LTD 300 Jet-Skis<br>1 x Sea-Doo GTX LTD 260 Jet-Ski<br>2 x Mansory Custom Sea-Doo Jet Skis<br>1 x Sea-Doo 260 RD Jet-Ski<br>4 x F5S Seabobs<br>Zapata-Racing Legend Flyboard<br>Zapata-Racing Hoverboard<br>Kayaks<br>Stand-up Paddleboards<br>Large Selection of Kitesurfing Equipment<br>Large Selection of Diving Equipment<br>Onboard Doublelock Decompression Chamber (IHC 1600 mm, 3-seats)<br>Wakesurfing Equipment<br>Waterskiing Equipment<br>Large Selection of Towing Inflatables<br>Wetsuits<br>Protective Equipment<br>Fishing Equipment |
| Communications: | VSAT, GSM Comprehensive Vessel Wide WIFI Network for Internet                                                                                                                                                                                                                                                                                                                                                                                                                                                                                                         |
| Entertainment:  | Bespoke AVIT system, Satellite TV, Large Music Selection<br>Large TV, Movie-, Radio Selection and Security system                                                                                                                                                                                                                                                                                                                                                                                                                                                     |





©FLYING FOX 2019 - all rights reserved.  
No reproduction or use of any photo in this book is permitted without approval of Imperial.

This brochure is produced for marketing purposes only.  
Items depicted are shown for illustration purposes only.  
Any charter of this yacht is subject to contract.